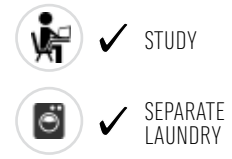
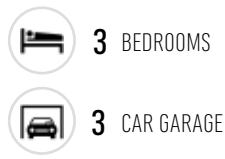


# Rimu



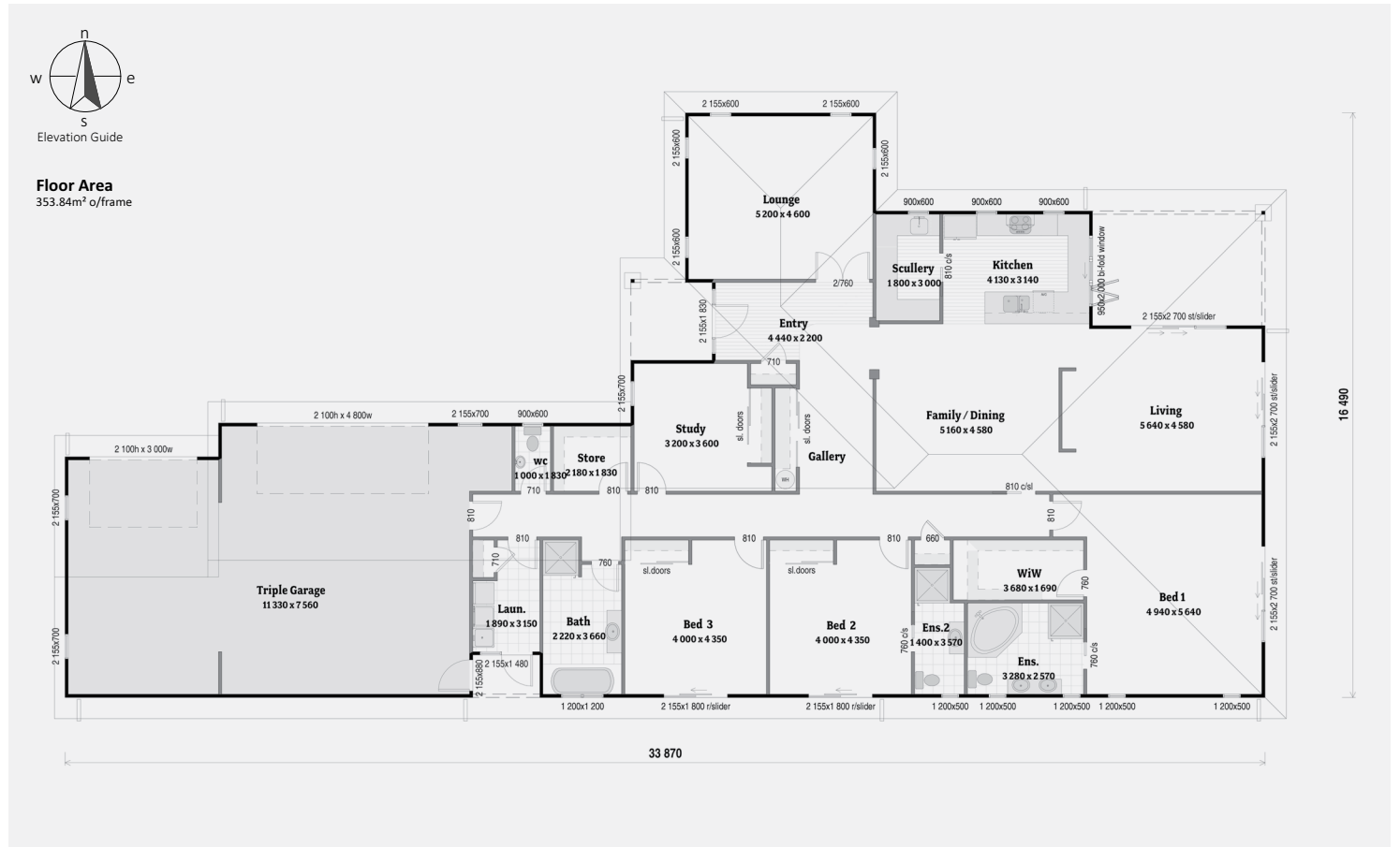
3 Bdrm / 353m<sup>2</sup>

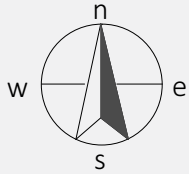
Imagine having over 350 square metres of space, with extra garage storage — in this life-style delight. You'll love the sheltered BBQ area, with a bi-fold window straight from the kitchen. There's a separate scullery with additional sink.



## KEY FEATURES OF THIS HOME

- Weatherboard cladding
- Designa Schist columns
- Open plan living
- Separate formal lounge
- Sheltered laundry entrance
- Triple garage





Elevation Guide

**Floor Area**  
353.84m<sup>2</sup> o/frame

